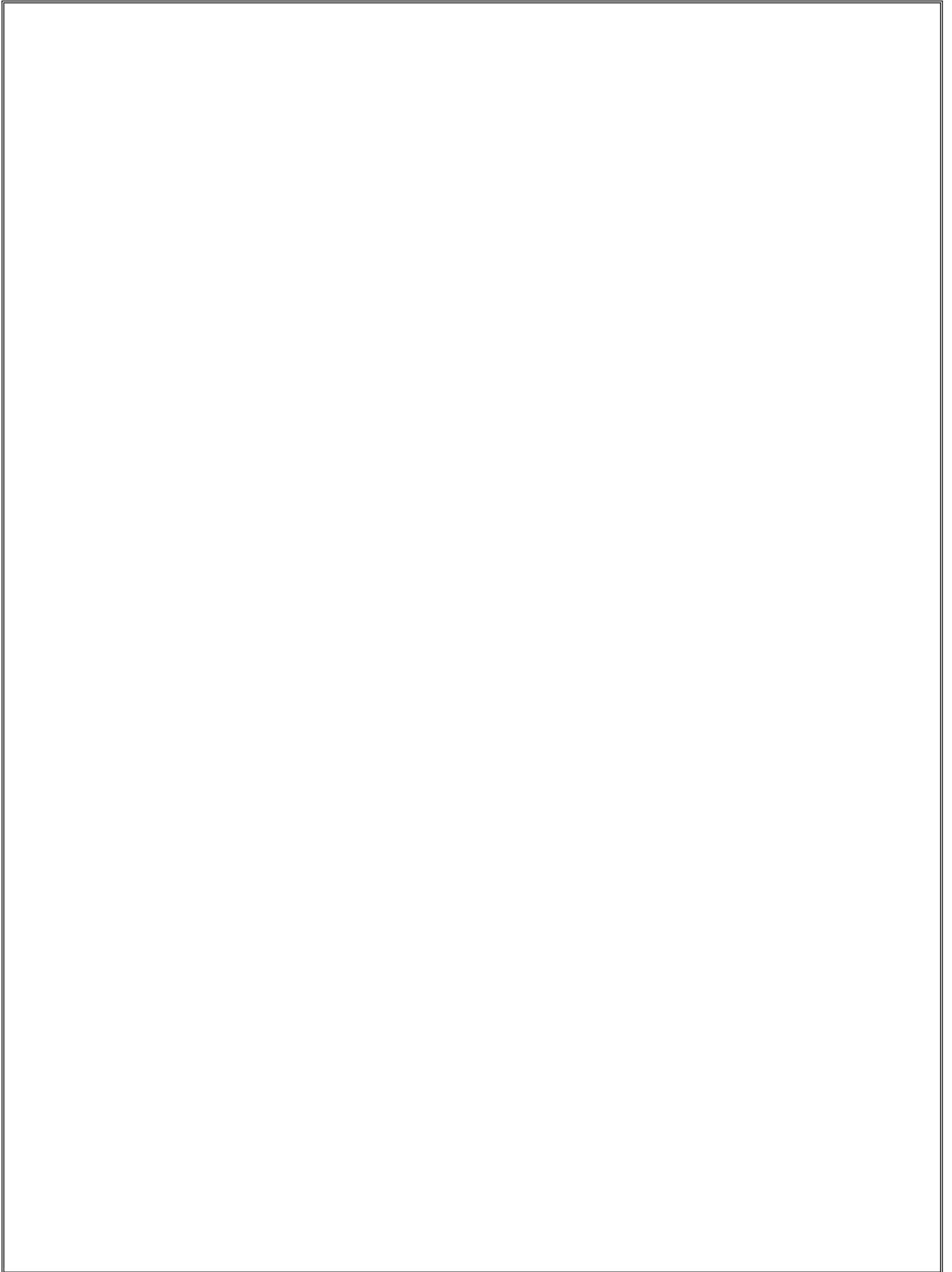


High Power AC LED Module Unde
P/N: HL-LE002F9VW-10B1C30(Ra2)



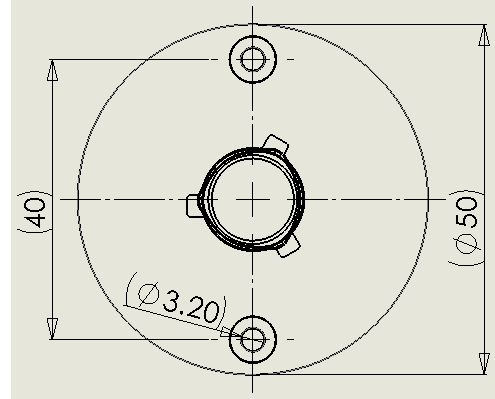
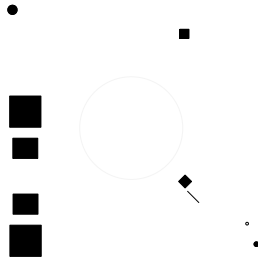
! 6W! • mil 0.8 ptio





Under Development	
Mass production	

4.Package Dimensions



The products supporting PC snaps.
PC

5.Performance

(1) Absolute Maximum Ratings

Parameter	Symbol	Rating Value	Units
FTqbfnf NhemT] X	N_{HLL}	*-	NRJFKS
IhpXk bl l bi Tmbhg	I)	0
CngVmbhg LXfi XkTmnkX)	$L_c E$)*	
	$L_c B9$)*-	
Lhi h[maX B9 mXfi XkTmnkX B9	L_i)	
Hi XkTmbg] LXfi XkTmnkX JTg] X	L_{hi}		
KmhkT] X LXfi XkTmnkX JTg] X	L_{lm}		
K KXgl bmbobmr	K		
EXTW KheWXkbg] LXfi XkTmnkX	L_{KHE}		

GhmXl [hk LTUeX

) LaX VTiTVbmr h[aXTm lbgd $L_c B9$)*-

$L_c B9$ L_i I_{B9} J_{B9} I_{B9})0 J_{B9} ** 0 L_i lnk[TVX mXfi XkTmnkX h[B9
 $L_c B9$)*-

$L_c B9$ L_i I_{B9} J_{B9} I_{B9})0 J_{B9} ** 0 L_i B9

* 7ee XqmkXfX VhgWmbhg] gXXW mh UX lTmb] bXW



Under Development	
Mass production	

(2) Electro-Optical Characteristics
Tc=25°C

at Tc=25°C

Parameter	Symbol	Condition	Min.	Typ.	Max.	Unit
Operating Voltage (1)	V_{OPT}		200	230	250	V
Power Dissipation	P_D	$V_{OPT}=230V$ 50HZ	9.5	10	10.5	W
Luminous Flux	Φ_v	TC=3000K	900	980	1070	lm
		TC=5700K	930	1010	1100	
CRI	R_a	$V_{OPT}=230V$ 50HZ	80			
Power Factor	PF	$V_{OPT}=230V$ 50HZ	0.95			
Tolerance of Surge *(7)	V_s		500			V

GhmXl [hk LTUeX

) Hi XkTmbg] NhemT]X WhXlg m bgWbVTmX maX fTqbfnf ohemT]X pabVa VnlmhfXkl nlX Unm fXTgl

* 9hehk Ubg1 TkX WX[bgXW Tm mkTglbXgm hi XkTmbhg

+ LaX mheXkTgVX h[fXTlnkXfXgm Tm hnk mXlmXk bl Φ_o) TgW JT *

-

/ Φ_o bl maX mhmTe enfbghnl [enq hnmi nm fXTlnkXW pbma Tg bgmX]kTmXW liaXkX

0 Knk]X bl WX[bgXW Tl WfT]X maTm fTr hVVnk paXg Tg XeXVmKhgbV WXobVX bl lnUcXVmXW mh T ohemT]X maTm bl UXrhgW maX fTqbfnf liXVb[bVTmbhg efbml h[maX WXobVX

JX[Xk mh maX ghmX +

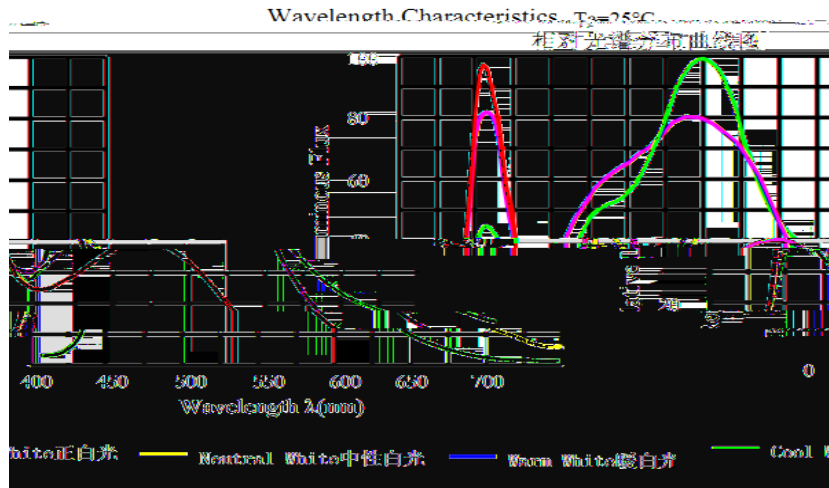
1 8TlX 8hTkW) ff VXkTfbV lnUlmkTmX LaXkfTe kXl bl mTgVX* 0 f D
) ff * 0 f D



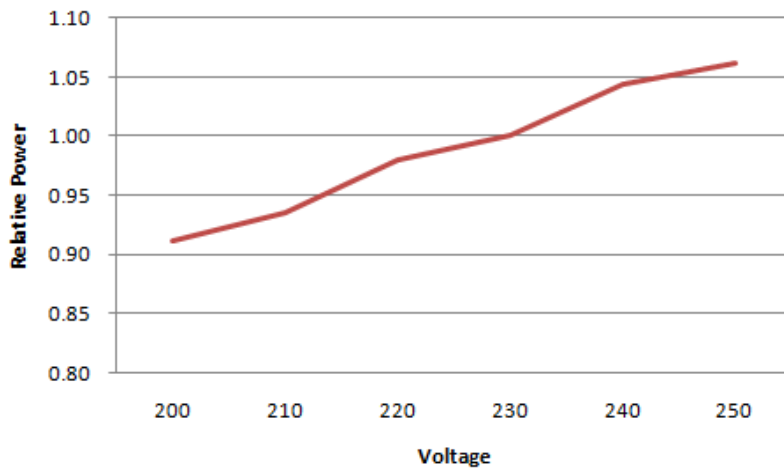
Under Development	
Mass production	

6.Characteristics

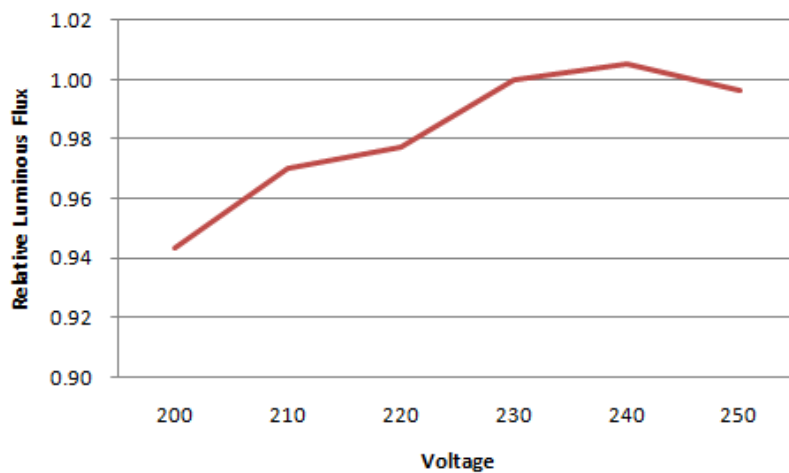
6.1 Color spectrum



6.2 Relative Power Distribution vs. Voltage at Ta=25



6.3 Relative Luminous flux vs. Voltage at Ta=25

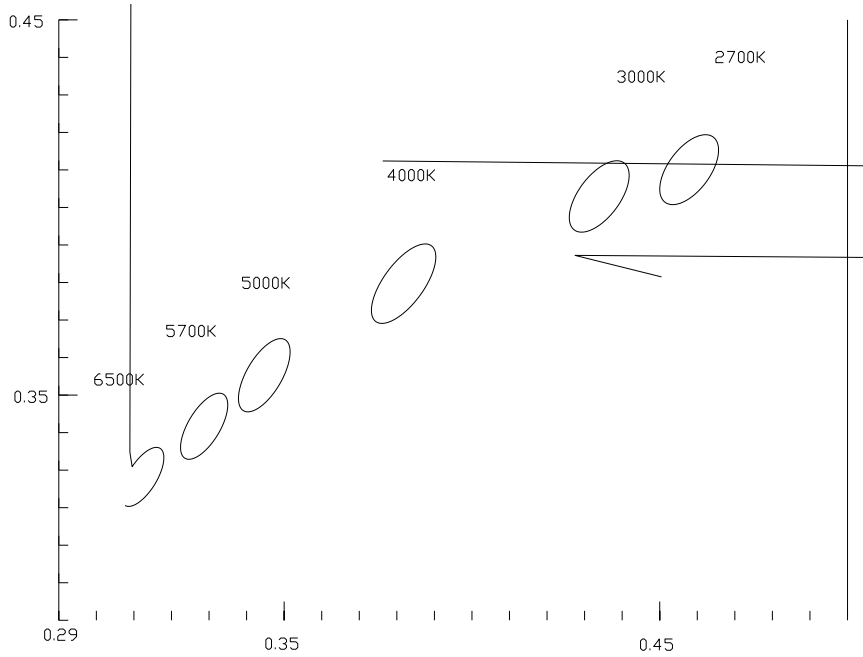




Under Development	
Mass production	

7.Product bins

Chromaticity bins



Center TC	2725K	3045K	3985K	5028K	5665K	6530K
X,Y	0.4578,0.4101	0.4338,0.403	0.3818,0.3797	0.3447,0.3553	0.329,0.3417	0.3123,0.3282

GhmXI

) The chromaticity center refers to ANSI C78.377-2008
bin ANSI C78.377-2008



Under Development	
Mass production	

8.Packing Specifications



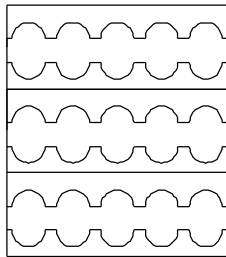
Label on blister packaging



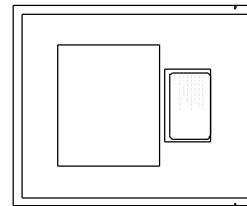
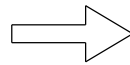
Label on box

V: Luminous Flux rank
TC: Color temperature

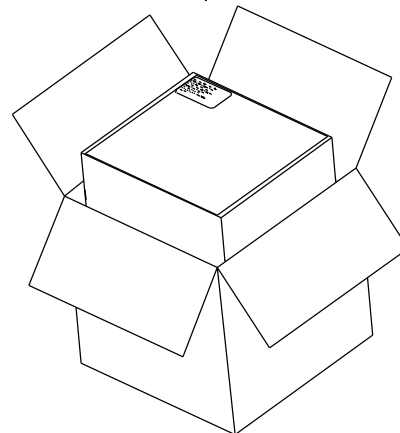
Packing figure



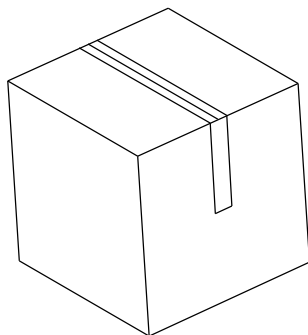
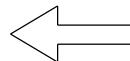
Tray: 15pcs



2Tray/ESD Shilding Bag: 30p cs



3ESD Shilding Bag/Inner Box: 90pcs



4Inner Box/Outer Box:360pcs



Under Development	
Mass production	

) KmhkT]X

Lh TohbW fhblmnkX pX kXVhffXgW lmkhT]X VhgWmbhgl [hk maX nghiXgXW E

bg] maX iTVdT]X IeXTlX fTdX lnkX mh WXanfbWb[r TgW oTVnnf iTVd maX kXfTbgbg]

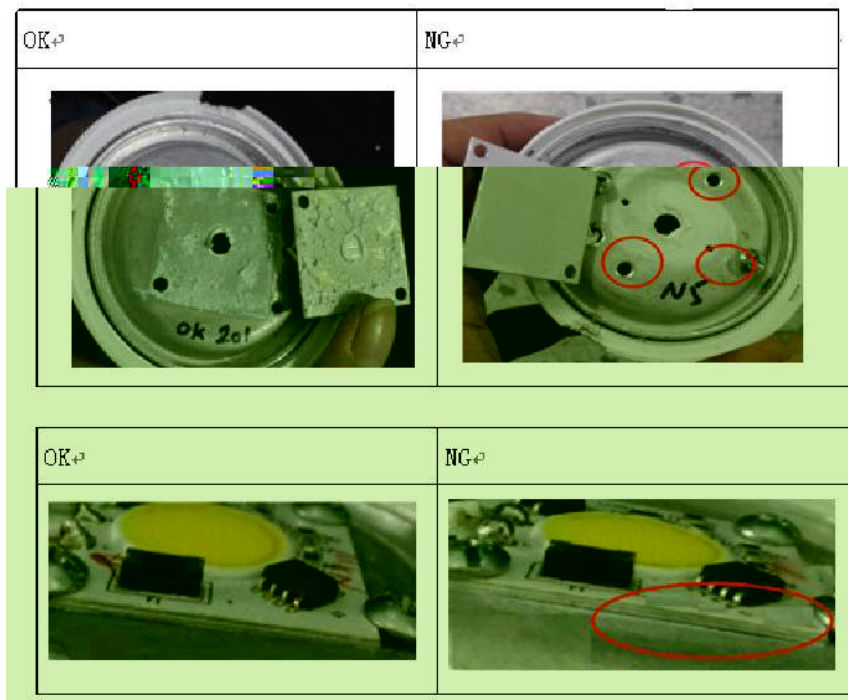
[hk maX lXTeXW eXW bl hgX rXTk

/ E)/1A

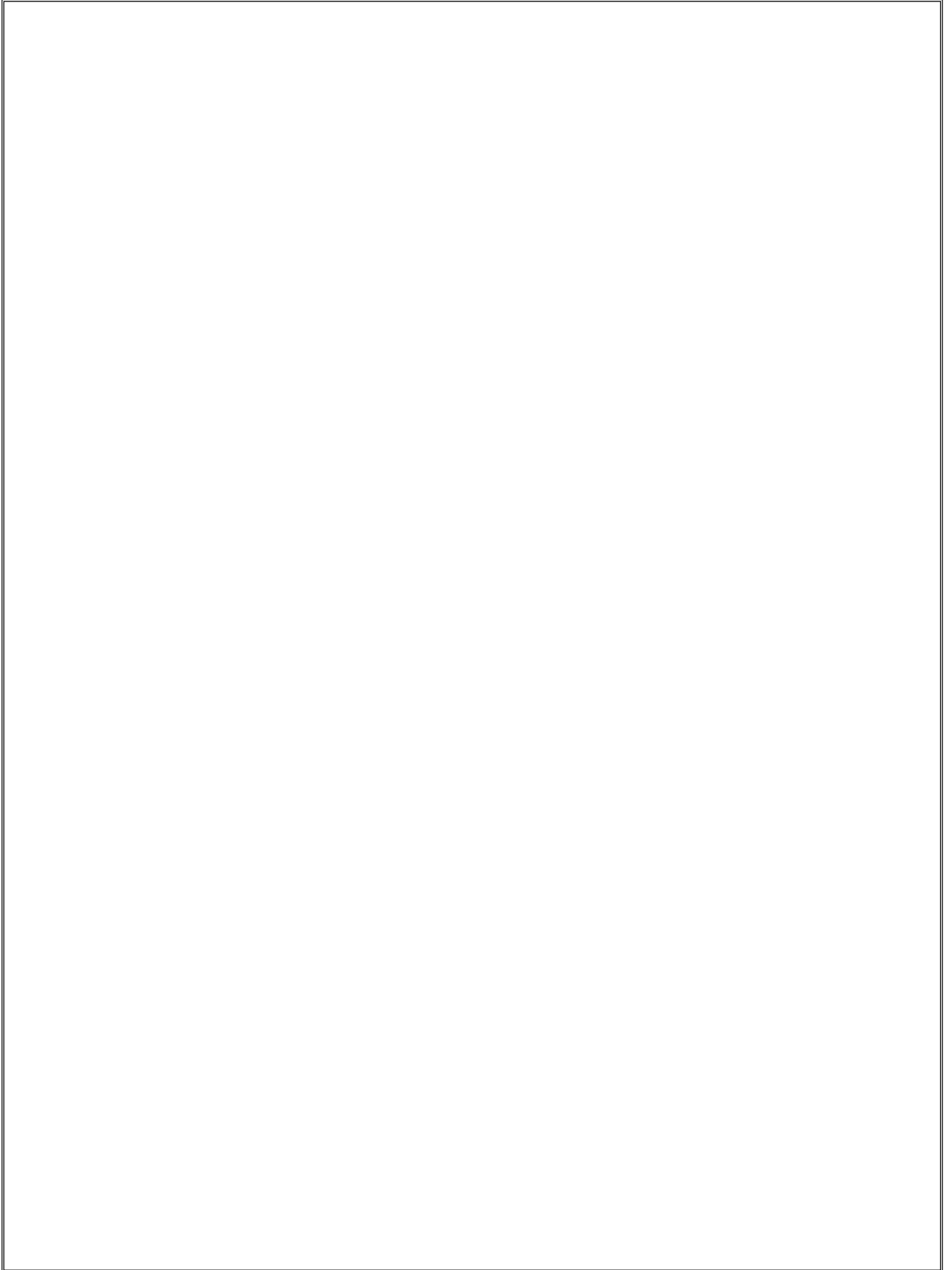
, A

* LaX lheWXkbg] ikXVTnmbhgl

nkg] TlIXfUer ieXTlX XglnkX maTm T]hhW jnTebmr maXkfTe iTlmX bl TiiebXW TgW
WblmkbUnmXW XoXger hoXk maX lnk[TVX OabeX nlbgl maXkfTe iTW AXtm Kbgd fTdX
lnkX E bl [bkfer mb]amXgXW TgW maXkX bl gh]Ti UXmpXXg lnk[TVXl



High Power AC LED Module
P/N: HL-LE002F9VW-10B1C30(Ra2)



High Power AC LED Module
P/N: HL-LE002F9VW-10B1C30(Ra2)

